

# STAINLESS STEEL TOILET ENCLOSURES

**THE LUXOR METPAR TYPE: FT-700E Floor Mounted**  
*Privacy Style*

**MATERIALS:** Stainless Steel #301/304 series in #4 finish

**THICKNESS:** Doors..... 22 Gauge, Finished to 1" (25.4mm) at 64" (1625.6) high  
Panels..... 20 Gauge, Finished to 1" (25.4mm) at 64" (1625.6) high  
Pilasters..... 18 Gauge, Finished to 1 1/4" (31.75mm) at 70" (1778) high

## CONSTRUCTION:

### Doors:

Finished to 1" (25.4) thick, constructed of two sheets of 22-gauge stainless steel formed and cemented under pressure to a honeycomb core. Door face sheets are welded at intervals around the entire perimeter. All edges to be finished with a 20-gauge stainless steel interlocking molding. Corners are finished with pre-formed stainless steel reinforcements. Doors shall have internal steel reinforcements to secure hardware items.

### Panels:

Finished to 1" (25.4) thick, constructed of 2 sheets of 20-gauge stainless steel, formed and cemented under pressure to a honeycomb core. All partition edges are finished with a 20-gauge stainless steel interlocking molding. Corners will be finished with pre-formed stainless steel reinforcements.

### Pilasters:

Finished to 1 1/4" (31.75) thick, constructed of two sheets of 18-gauge stainless steel, formed and assembled with a honeycomb core. Face sheets are electrically welded at intervals around the entire perimeter. All pilasters will have a 4" (101.6) high #4 finish stainless steel plinth and have straight, flat sides profile with rounded edges to match the pilaster profile. Mounting channels are 12-gauge steel electrically welded to the pilaster face sheets. Zinc plated 3/8" (9.525) diameter studs, lock washers, nuts and lead expansion shields are provided.

## BRACKETS:

Attachment brackets are die cast chrome plated stirrup brackets. Minimum of three (3) fittings at each connection.

## DOOR HARDWARE:

Each compartment will be complete with two door hinges, latch, stop and keeper, coat hook, as well as all necessary fittings and fastenings for a complete installation. Hinges are fastened by means of tamper-proof Torx Pin Head through bolts, which are polished chrome plated. All other screws to be tamper-proof Torx Pin Head chrome plated. Doors are to be hung on a concealed, "stay-set", fully adjustable, non-rising door mechanism. Upper hinge pin shall be 3/8" (9.525) diameter steel. All hinges will have wrap-around flanges with a minimum of 5/8" (15.875) wrap onto pilaster. All doors will have a concealed ADA approved slide latch with external "in-use" indicator. A continuous anodized aluminum extrusion, is provided for both strike & hinge sides to eliminate gaps between door & pilaster.

## FINISH:

All stainless steel partitions are supplied with high strength 300 series alloys in a #4 finish. Optional 2B leathergrain and 5SM diamond pattern textured finishes are also available.

## OPTIONS:

Full height 63" bright dip anodized aluminum brackets or stainless steel angles & U-Channels, 63" stainless steel MutliCam® hinges, Cast S/S wraparound hinges, surface latch, S&K. Other special heights or special elevations AFF.



## **METPAR CORP**

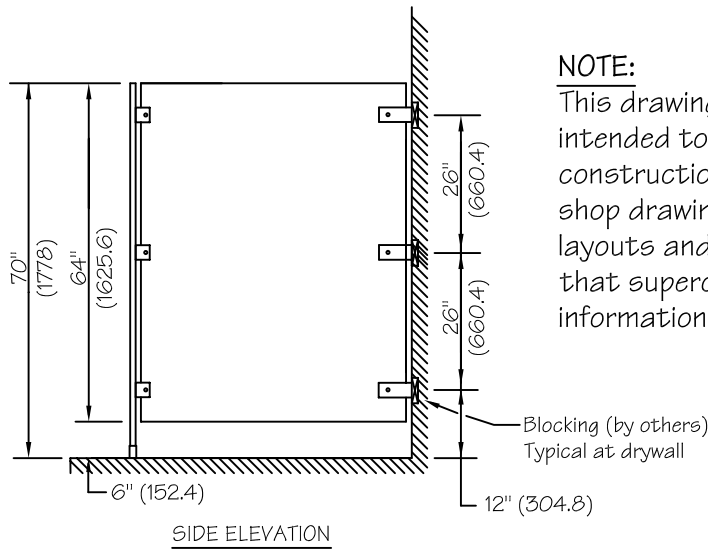
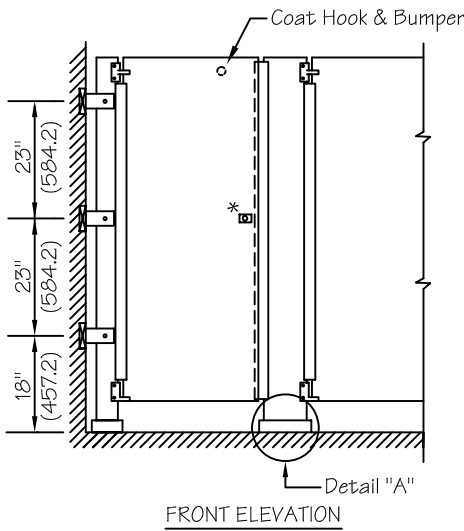
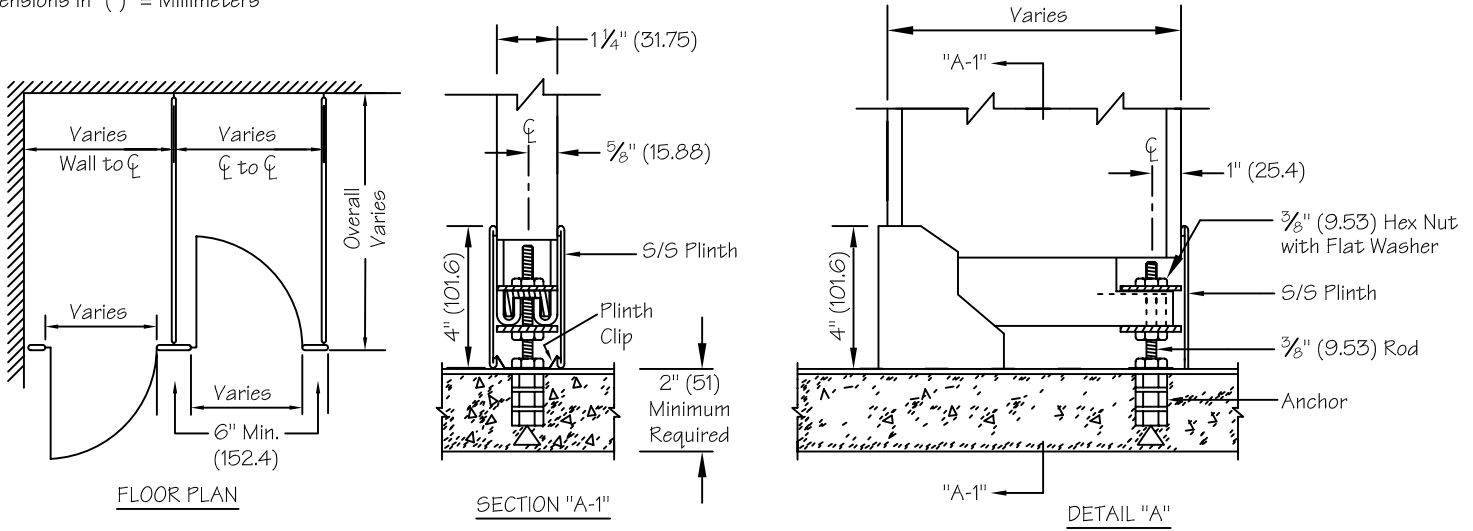
95 State Street, P.O. Box 1873

Westbury, New York, 11590

Tel: (516) 333-2600 ~ Fax: (516) 333-2618

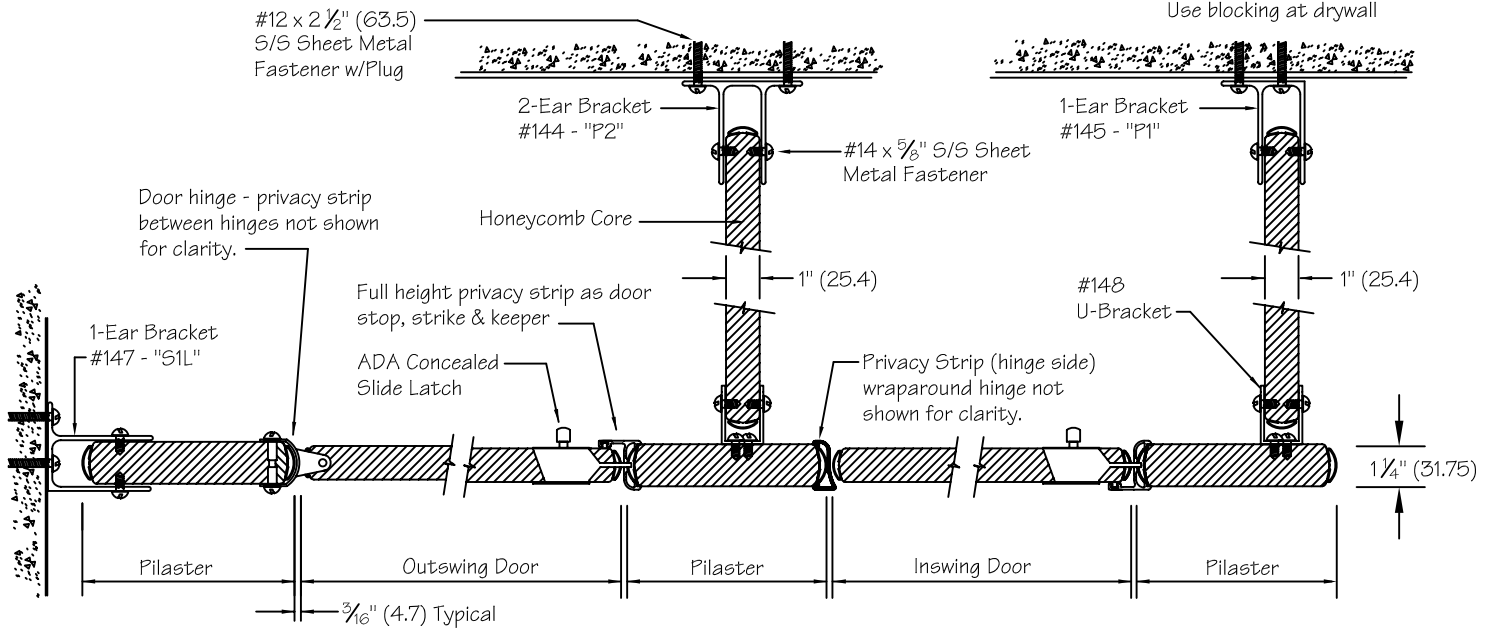
Email: [Sales@Metpar.com](mailto:Sales@Metpar.com) ~ URL: <http://www.Metpar.com>

Dimensions in "( )" = Millimeters



**NOTE:**  
 This drawing is a standard detail intended to show general construction and specification. See shop drawing(s) for actual job layouts and specific job conditions that supersede any conflicting information on this detail sheet.

\*Concealed Latch w/"In-Use" Indicator - Elevation 41" AFF unless otherwise specified.



# METPAR CORP

95 State Street, Westbury, NY 11590

Tel: 516-333-2600 Fax: 516-333-2618

www.Metpar.com ~ Sales@Metpar.com

## STAINLESS STEEL

Special Detail - FT700E

DORIAN Style with Privacy Strips

FT7005SE.DWG

01/25/2012