

# PLASTIC LAMINATE TOILET ENCLOSURES

*Floor-To-Ceiling*      **METPAR TYPE: FT Bottom / FP Top**

**MATERIALS:**      Plastic Laminate over particle board.

**THICKNESS:**      Doors..... Finished to 7/8" (22.225mm)  
Panels..... Finished to 7/8" (22.225mm)  
Pilasters..... Finished to 1 1/4" (31.75mm)

## **CONSTRUCTION:**

### Doors:

Finished to 7/8" (22.225) thick, constructed of .050" (1.27) high-pressure decorative laminate over three-ply core, resin impregnated, 45-pound density particle board; *NEMA* approved and used exclusively. Edge laminates are applied before face laminates.

### Panels:

Finished to 7/8" (22.225) thick, constructed of .050" (1.27) high-pressure decorative laminate over three-ply core, resin impregnated, 45-pound density particle board; *NEMA* approved and used exclusively. Edge laminates are applied before face laminates.

### Pilasters:

Finished to 1/4" (31.75) thick, constructed of .050" (1.27) high-pressure decorative laminate over three-ply core, resin impregnated, 45 pound density particle board; *NEMA* approved and used exclusively. Edge laminates are applied before face laminates. All pilasters will have a 3" (76.2) high #4 finish stainless steel plinth (type 304) and have a straight profile with square edges to match the pilaster profile. Pilasters are to be secured to the ceiling with #12 x 2 1/2" (63.5) screws and shields through a 16 gauge, hot-dipped galvanized channel fastened to top of pilaster. Floor mounting will be with 3/8" (9.52) steel anchor or mechanism fastened to cylindrical anchors implanted through the complete thickness of pilaster.

## **FITTINGS:**

Wall and pilaster-to-panel fittings are chrome-plated zamac die castings. All connections must be with 1-ear or 2-ear brackets.

## **HARDWARE:**

Each compartment will be complete with all hardware, door hinges, latch, stop and keeper, coat hook, as well as all necessary fittings and fastenings for a complete installation. Hinges and door strikes are fastened by means of tamper-proof Torx Pin head through bolts, which are polished chrome plated. All other screws to be tamper-proof Torx Pin head chrome plated. Doors are to be hung on concealed gravity hinges. Upper hinge shall use a 3/8" (9.525) diameter steel pin. All hinges will have wrap-around flanges with a minimum of 5/8" (15.875) wrap onto all pilasters.

## **OPTIONAL:**

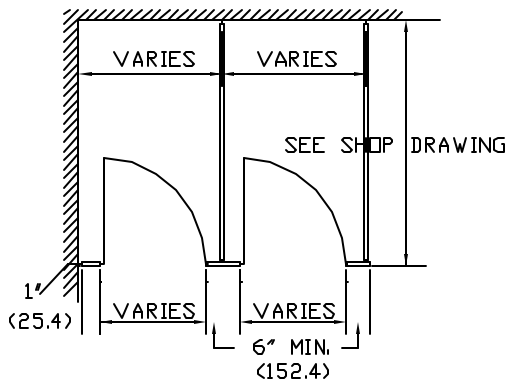
Steel Core pilasters with 11 gauge steel core; full height and width of pilasters; supplied only on 6" (152.4) wide or larger pilasters. Stainless (type 304) edging around perimeter.



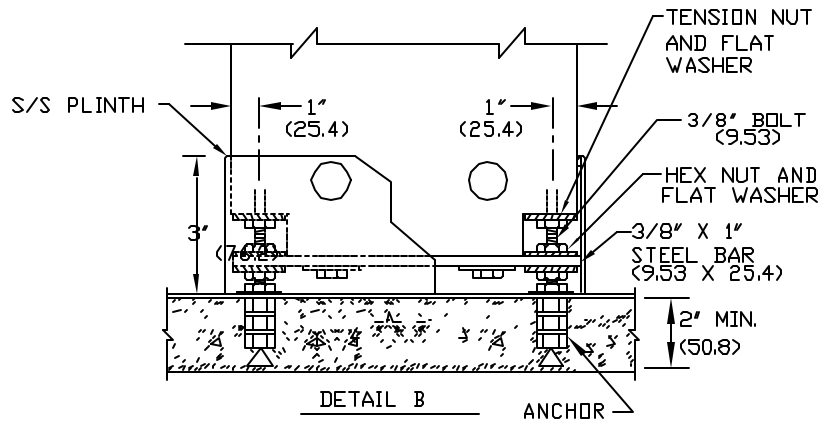
## **METPAR CORP.**

95 State Street  
Westbury, NY 11590  
Tel: (516) 333-2600  
Fax : (516) 333-2618

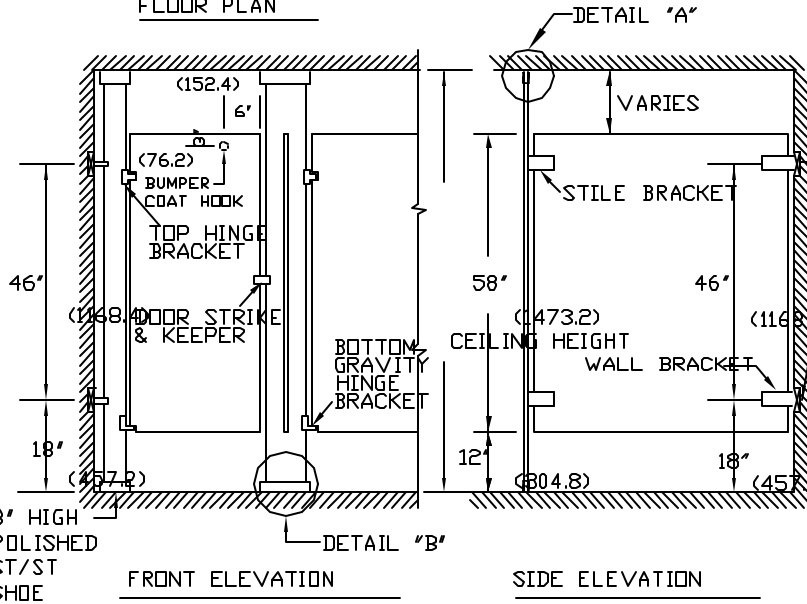
DIMENSIONS IN ( ) = MILLIMETERS



FLOOR PLAN

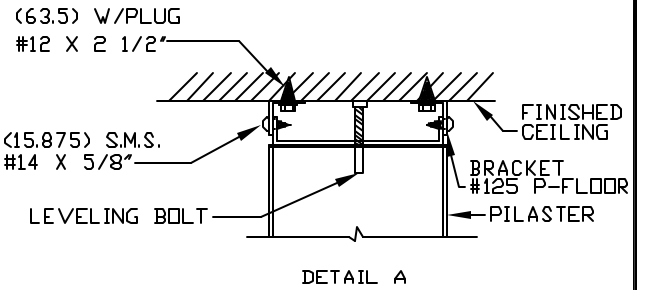


DETAIL B ANCHOR



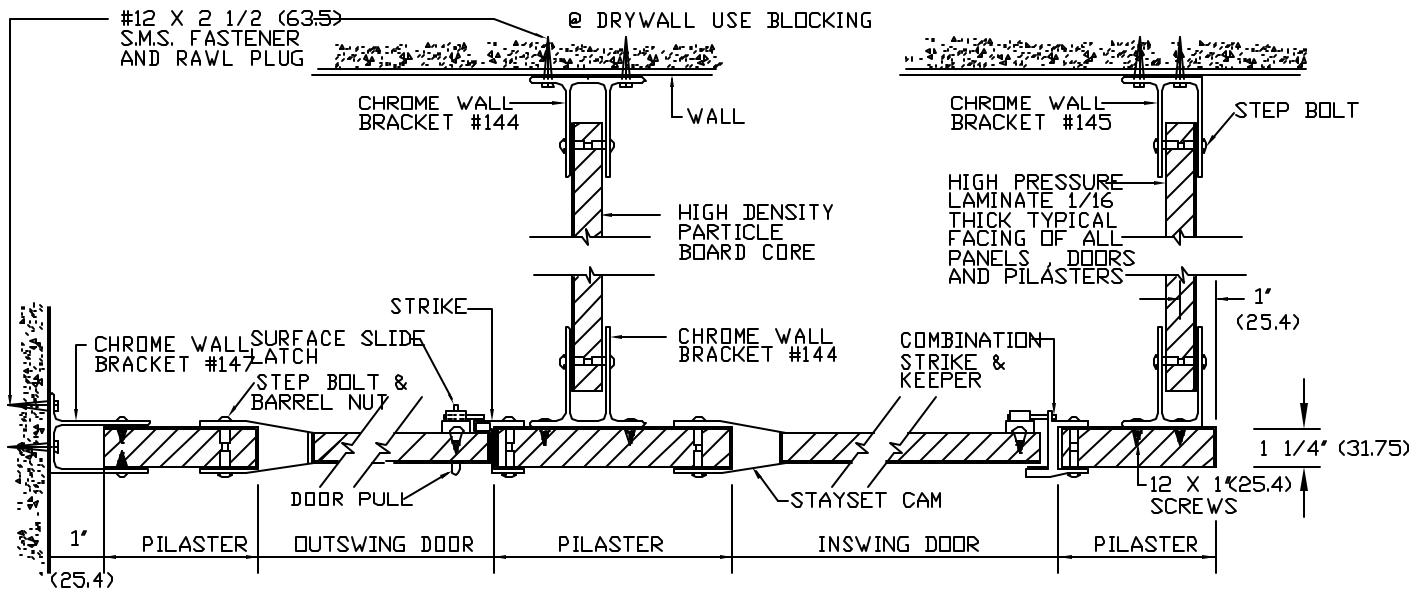
FRONT ELEVATION

SIDE ELEVATION



DETAIL A

NOTE:  
THIS DRAWING IS A STANDARD DETAIL INTENDED TO SHOW GENERAL CONSTRUCTION AND SPECIFICATION INFORMATION. SEE SHOP DRAWINGS FOR ACTUAL JOB LAYOUT AND SPECIFIC JOB CONDITIONS WHICH SUPERCEDE ANY CONFLICTING INFORMATION ON THIS DETAIL SHEET.



# METPAR CORP

95 State Street, Westbury, NY 11590

Tel: 516-333-2600 Fax: 516-333-2618

## PLASTIC LAMINATE

SPECIAL DETAIL FT BOTTOM FP TOP  
FLOOR TO CEILING

FCFTFPPL.DWG

5/00