

# STAINLESS STEEL TOILET ENCLOSURES

***THE LUXOR***      **METPAR TYPE: FT-700E**      **Floor Mounted**  
***Eastern Style***

**MATERIALS:**            Stainless Steel Type 304

**THICKNESS:**            Doors..... 22 Gauge, Finished to 1" (25.4mm) at 69" (1752.6) high  
Panels..... 20 Gauge, Finished to 1" (25.4mm) at 69" (1752.6) high  
Pilasters..... 18 Gauge, Finished to 1 1/4" (31.75mm) at 70" (1778) high

## **CONSTRUCTION:**

### Doors:

Finished to 1" (25.4) thick, constructed of two sheets of 22-gauge, type 304 stainless steel formed and cemented under pressure to a honeycomb core. Door face sheets are welded at intervals around the entire perimeter. All edges to be finished with a 20-gauge stainless steel interlocking molding. Corners are finished with pre-formed stainless steel (type 304) reinforcements. Doors shall have internal steel reinforcements to secure hardware items.

### Panels:

Finished to 1" (25.4) thick, constructed of 2 sheets of 20-gauge type 304 stainless steel, formed and cemented under pressure to a honeycomb core. All partition edges are finished with a 20-gauge stainless steel interlocking molding. Corners will be finished with pre-formed stainless steel (type 304) reinforcements.

### Pilasters:

Finished to 1 1/4" (31.75) thick, constructed of two sheets of 18-gauge, type 304 stainless steel, formed and assembled with a honeycomb core. Face sheets are electrically welded at intervals around the entire perimeter. All pilasters will have a 3" (76.2) high #4 finish stainless steel plinth (18-8 type 304) and have straight, flat sides profile with rounded edges to match the pilaster profile. Mounting channels are 12-gauge steel electrically welded to the pilaster face sheets. Zinc plated 3/8" (9.525) diameter studs, lock washers, nuts and lead expansion shields are provided.

## **FITTINGS:**

Wall fittings are die cast chrome plated.

## **HARDWARE:**

Each compartment will be complete with all hardware, 3 stainless steel door hinges, C.P. Zamac latch, stop and keeper, coat hook, as well as all necessary fittings and fastenings for a complete installation. Hinges and door strikes are fastened by means of tamper-proof Torx-Pin Head through bolts, which are polished chrome plated. All other screws to be tamper-proof Torx-Pin Head chrome plated. Doors to be hung with 3 stainless steel door hinges; hinge material to be 12 gauge 304 stainless steel with bearing angles of 16 gauge 304 stainless to be electrically welded to full length of both leaves of the top and bottom hinge assemblies to prevent door sag. Fully adjustable door positioning cam and pintle to be made from nylon with a stainless steel pin encased in nylon. Pin must be held in position with snap ring design. All doors will have a concealed ADA approved slide latch with external "in-use" indicator.

## **FINISH:**

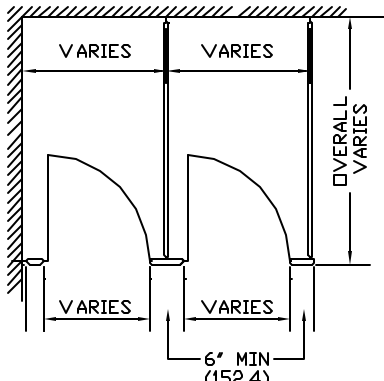
All stainless steel material will have a #4 satin finish.



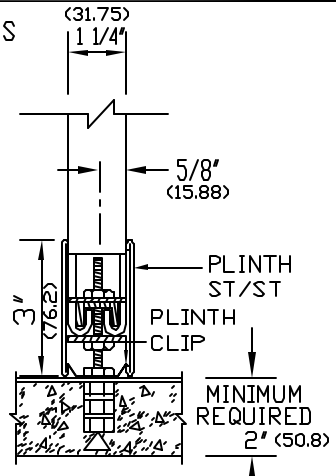
## **METPAR CORP.**

95 State Street  
Westbury, NY 11590  
Tel: (516) 333-2600  
Fax : (516) 333-2618

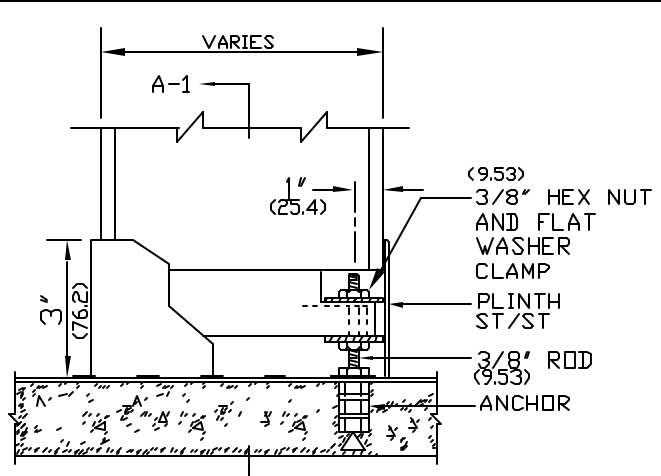
DIMENSIONS IN ( ) = MILLIMETERS



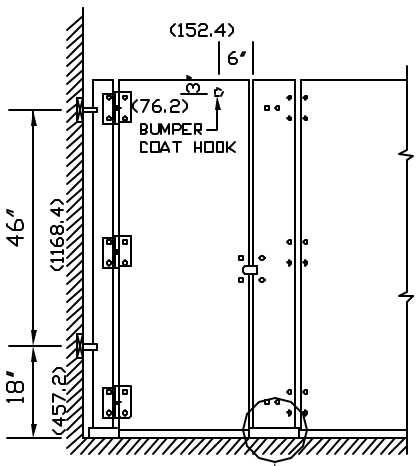
FLOOR PLAN



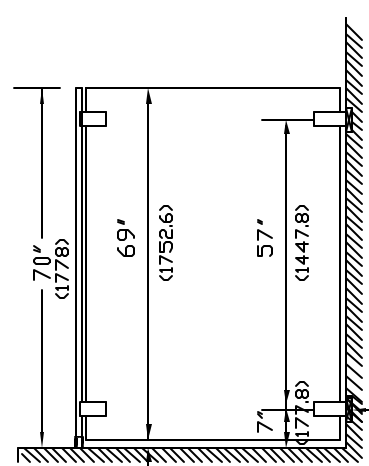
SECTION-A-1



DETAIL A



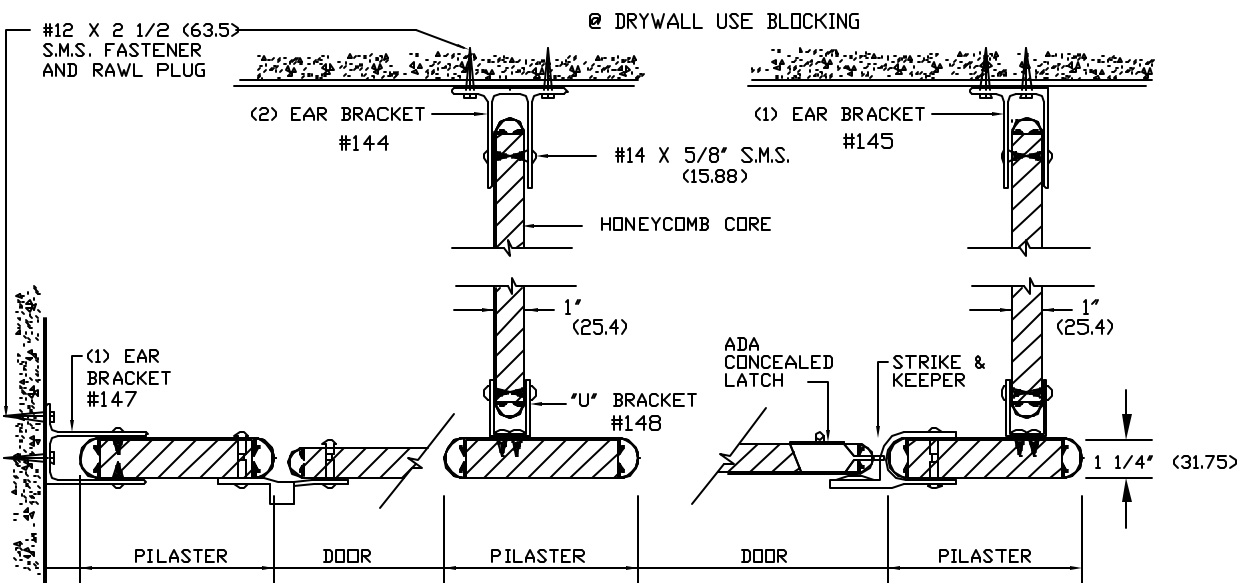
FRONT ELEVATION



SIDE ELEVATION

NOTE:  
THIS DRAWING IS A STANDARD  
DETAIL INTENDED TO SHOW  
GENERAL CONSTRUCTION AND  
SPECIFICATION INFORMATION, SEE  
SHOP DRAWING FOR ACTUAL JOB  
LAYOUTS AND SPECIFIC JOB  
CONDITIONS WHICH SUPERCEDE  
ANY CONFLICTING INFORMATION  
ON THIS DETAIL SHEET.

BLOCKING  
BY OTHERS  
(TYP) @ DRYWALL



# METPAR CORP

95 State Street, Westbury, NY 11590  
Tel: 516-333-2600 Fax: 516-333-2618

STAINLESS STEEL  
EASTERN STYLE FT-700E  
THE LUXOR

FT700SSE.DWG

5/00