

# PLASTIC LAMINATE TOILET ENCLOSURES

***THE LUXOR METPAR TYPE: FT-700E Floor Mounted***  
***Eastern Style***

**MATERIALS:** Plastic Laminate over particle board.

**THICKNESS:** Doors..... Finished to 7/8" (22.225mm) at 69" (1752.6) high  
Panels..... Finished to 7/8" (22.225mm) at 69" (1752.6) high  
Pilasters..... Finished to 1 1/4" (31.75mm) at 70" (1778) high

## **CONSTRUCTION:**

### Doors:

Finished to 7/8" (22.225) thick, constructed of .050" (1.27) high-pressure decorative laminate over three-ply core, resin impregnated, 45-pound density particle board; *NEMA* approved and used exclusively. Edge laminates are applied before face laminates.

### Panels:

Finished to 7/8" (22.225) thick, constructed of .050" (1.27) high-pressure decorative laminate over three-ply core, resin impregnated, 45-pound density particle board; *NEMA* approved and used exclusively. Edge laminates are applied before face laminates.

### Pilasters:

Finished to 1 1/4" (31.75) thick, constructed of .050" (1.27) high-pressure decorative laminate over three-ply core, resin impregnated, 45 pound density particle board; *NEMA* approved and used exclusively. Edge laminates are applied before face laminates. All pilasters will have a 3" (76.2) high #4 finish stainless steel plinth (type 304) and have a straight profile with square edges to match the pilaster profile. Pilasters are to be secured to the floor by a 3/8" (9.525) steel anchor bar mechanism fastened to cylindrical anchors implanted through the complete thickness of the pilaster. Tension nuts are used to apply equal and opposite pressure to all points of mounting system. Zinc plated 3/8" (9.525) diameter studs, lockwashers, nuts and leadexpansion shields are provided.

## **FITTINGS:**

Wall and pilaster-to-panel fittings are chrome-plated zamac die castings. All connections must be with 1-ear or 2-ear brackets.

## **HARDWARE:**

Each compartment will be complete with all hardware, 3 stainless steel door hinges, C.P. Zamac latch, stop and keeper, coat hook, as well as all necessary fittings and fastenings for a complete installation. Hinges and door strikes are fastened by means of tamper-proof Torx-Pin Head through bolts, which are polished chrome plated. All other screws to be tamper-proof Torx-Pin Head chrome plated. Doors to be hung with 3 stainless steel door hinges; hinge material to be 12 gauge 304 stainless steel with bearing angles of 16 gauge 304 stainless to be electrically welded to full length of both leaves of the top and bottom hinge assemblies to prevent door sag. Fully adjustable door positioning cam and pintle to be made from nylon with a stainless steel pin encased in nylon. Pin must be held in position with snap ring design.

## **OPTIONAL:**

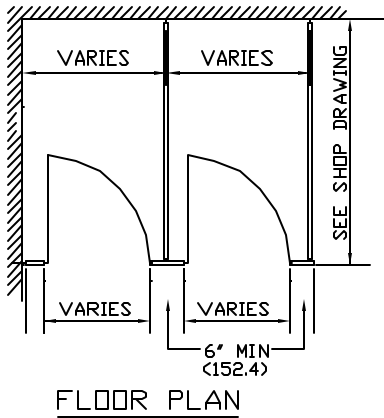
Steel Core pilasters with 11 gauge steel core; full height and width of pilasters; supplied only on 6" (152.4) wide or larger pilasters. Stainless (type 304) edging around perimeter.



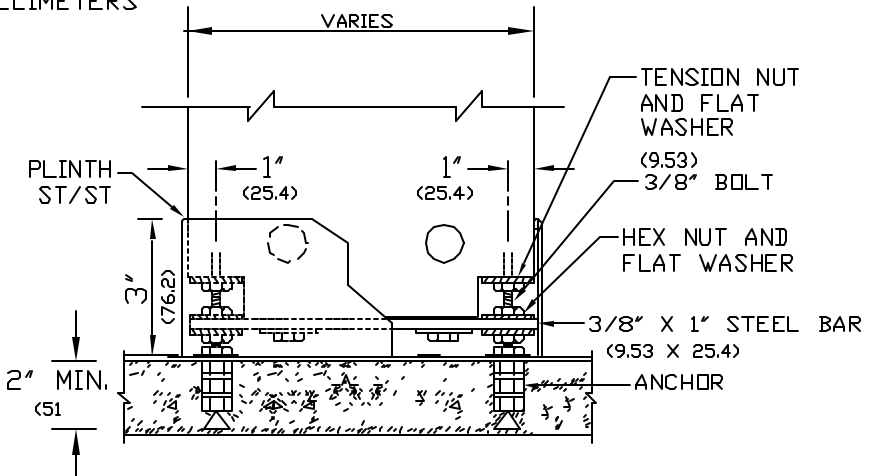
**METPAR CORP.**

95 State Street  
Westbury, NY 11590  
Tel: (516) 333-2600  
Fax : (516) 333-2618

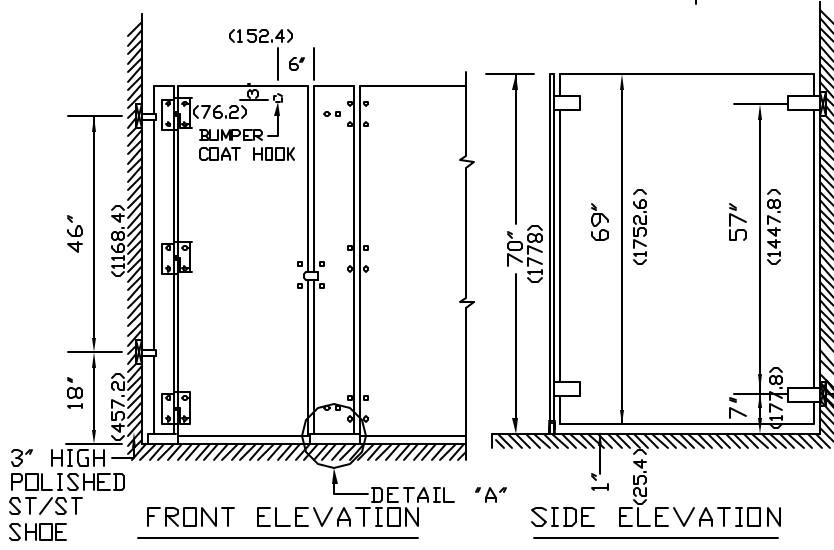
DIMENSIONS IN ( ) = MILLIMETERS



FLOOR PLAN



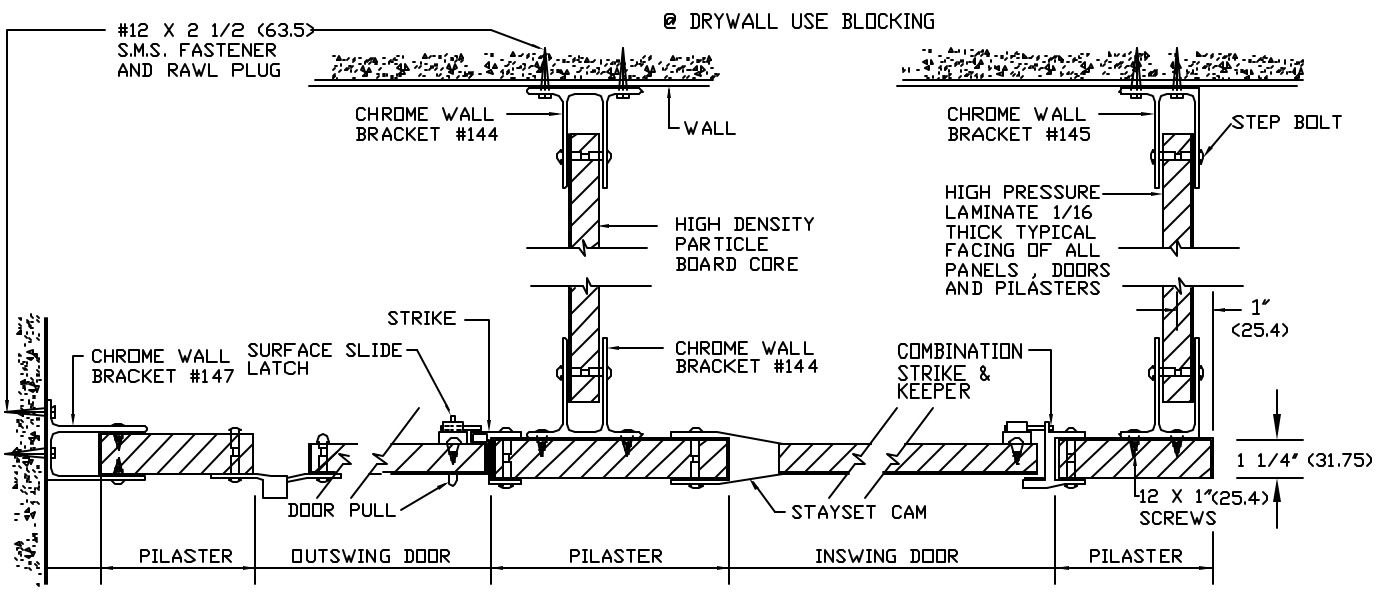
DETAIL B



FRONT ELEVATION SIDE ELEVATION

NOTE:  
THIS DRAWING IS A STANDARD DETAIL INTENDED TO SHOW GENERAL CONSTRUCTION AND SPECIFICATION INFORMATION. SEE SHOP DRAWINGS FOR ACTUAL JOB LAYOUT AND SPECIFIC JOB CONDITIONS WHICH SUPERCEDE ANY CONFLICTING INFORMATION ON THIS DETAIL SHEET.

BLOCKING  
BY OTHERS  
(TYP) @ DRYWALL



**METPAR CORP**  
 95 State Street, Westbury, NY 11590  
 Tel: 516-333-2600 Fax: 516-333-2618

**PLASTIC LAMINATE**  
 EASTERN STYLE FT-700E  
 THE LUXOR  
 FT700PLE.DWG 5/00